

ClearWater Conservancy's 11th Annual

For the of

Love of

ART

and

CHOCOLATE

January 22, 2010, 6:30 to 10 p.m.,
The Penn Stater Hotel and Conference Center
Benefiting the
ClearWater Conservancy of Central Pennsylvania

Welcome &

Throughout the evening, please enjoy,
Laura Sullivan and Susan Hawthorne, tonight's Emcees
Music by Jazza-Ma-Phone
Feasting on Chocolate Delicacies

- 6:30 - 9:30** **Silent Auction of Nature-inspired Art**
- 7:45** **ClearWater Conservancy Welcome Message**
 Jennifer Shuey, Executive Director
 Kelleann Foster, President
- 8:45** **Drawing for Door Prizes**
- 9:30** **Raffle drawings: Jennifer Kane Tussey View**
 Farm Painting and Persian Carpet from
 Desert Rug Company (\$10 tickets for sale in
 lobby or at the raffle table until drawing)

Door Prizes:

- Edible Arrangements - Gift Card
- Glory's Homemade Fudge
- Endangered Species Chocolates
- Gertrude Hawks Chocolates - Best Truffles
- Theo Organic Chocolate Bars - variety
- Ishkabibble Sweet Treats
- Harrison's Wine Country Grill Gift Card
- Nature's Pantry - Gift Certificate + Chocolate Bar
- Douglas Albert Gallery - Fine Art & Collectibles
- Chili's Grill and Bar - Gift Certificate
- Outback Steakhouse - Gift Certificate
- Texas Roadhouse - Gift Certificate
- Curves- Gift Basket & Gift Certificate
- Fasta Ravioli Company - Gift Basket

A Note of Thanks from the Chairs

As our world enters a new decade, so too does this event. This is the first For the Love of Art and Chocolate in our second decade – And this year ClearWater Conservancy is turning 30! Our event has evolved and grown wonderfully each year. New in 2010 is the inclusion of young artists' inspiring work from the Kids Network based out of Radio Park Elementary School.

Please enjoy viewing their work in the entry hall.

Although this is our eleventh year, it is still awe inspiring how the whole thing comes together so beautifully. Our delight in putting this on is due to the terrific support of so many people who believe in ClearWater and its mission. That generosity starts with our sponsors, highlighted on the back cover. Many thanks also to photographer Bruce Cramer and PixelClear, Inc., to graphic designer Patty Craig and to printer, Advanced Color Graphics, for creating this beautiful program. We are sincerely grateful to the talented artists who give their creations so enthusiastically – their work is a true gift! We also extend thanks to downtown stores for their window use during First Night State College to display the art, and to Lori Savage and Talley Fisher for helping arrange the displays.

Tonight we welcome back Jazza-Ma-Phone's live performance and greatly appreciate all the delicious delicacies! (Donors listed inside back cover). We also extend a hand of thanks to Dr. Dave Cranage and the Penn State Catering Club students for their expertise in arranging and distributing all the goodies. We truly appreciate the help of Beverly Harader, Jenny Bickford and Rosalie Bailey in confirming the food donations, Annie Mascelli for her decorating flair, all door prize donors, Jennifer Kane and Desert Rug Company for their generous donations for the special raffles, and all the volunteers who work the weeks, days and the night of the event. This event could not happen without all of you. And we owe a deep debt of gratitude to Holly Fitchman, who is stepping down as co-chair. Her special touch has left a distinctive mark on the quality of this event. We welcome Talley Fisher, who takes over from Holly next year.

And finally, thank you to all attending tonight – we could not be more pleased that you are here to support ClearWater's mission while having a delightful evening!

Holly Fritchman and Kelleann Foster, Co-Chairs

Artists &

The Ammonite & Jabebo Earrings



Kevin Abbott

Gouche

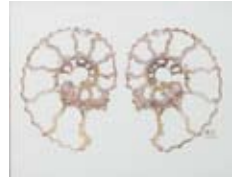
Recycled Cereal Boxes

The Ammonite piece is part of a series (#9) based on an ammonite fossil.

The first pair of earrings Kevin made was for his girlfriend (now his wife) when he was in the Peace Corps. She requested that he make her a pair with the sun on one side and the moon on the other. Since then, every pair of earrings he has made has been similarly mismatched.

Kevin works full-time from his Bellefonte home crafting earrings using recycled cereal boxes. His education is in wildlife ecology and his previous “real jobs” include working as a manatee biologist in Florida, volunteering for two years in the Peace Corps in Kenya, and creating exhibits for the

Hands-On Science Center in the Smithsonian American History Museum. Website: www.jabebo.com.



Mt. Nittany



Harold Altman

1992; Lithograph, professionally matted by The State College Framing Company and Gallery

Harold Altman was born in New York City in 1924 and passed away in 2003. He attended the Art Students League, the Black Mountain College, the Academie de la Grande Chaumiere in Paris, and was a graduate of the Cooper

Union Art School. Since 1962 he lived in Lemont, where a nineteenth century frame church served as his studio. The artist's works have been exhibited at numerous galleries and museums, both in the United States and abroad. He is represented in nearly every significant collection in the world.

New York's Museum of Modern Art owns over forty Altmans while the Whitney and Brooklyn Museums each have over fifty of his works in their permanent collections. His work is to be found in many museum collections outside of the United States, several of which are the Victoria and Albert Museum of London, the Stedelijk Museum of Amsterdam, the Kunst Museum of Basel, the Royal Museum of Fine Arts of Copenhagen and the Bibliotheque Nationale of Paris. Altman has received numerous awards, grants and fellowships. Among them are two Guggenheim Fellowships, a Tamarin Lithography Fellowship, a National Institute of the Arts and Letters Award, a Fulbright-Hayes Senior Research Fellowship for work in France and a National Endowment for the Arts Grant. Website: www.haroldaltman.com.

No, You First



Sylvia R. Apple

October 2009; Clay

I am enjoying making penguins and feel committed to helping them survive in the ice they depend on so much.



Since childhood, Sylvia has enjoyed creating images of nature. She is known for her fiber art, but she also has training in painting and sculpture, which she continues to pursue. Almost all of her art is inspired by the natural world which is so powerful, and yet fragile at the same time. Website: apple.heirloom.art.googlepages.com.



Focus



Beth Aten

Fiber

I am fortunate to live in a peaceful hollow on the edge of a large tract of Pennsylvania woodland. Here I garden and walk daily in the woods often using my camera to capture memorable happenstances; the juxtaposition of flower varieties in bloom, intertwining branches on an icy day, or an unexpected bright fungi on craggy bark. I have been

translating these moments of beauty into fiber for the last 17 years.

I begin in the dye studio where I color papers by dyeing, painting, silk-screening and printing using a variety of constructed, found, and antique objects. I then collage these papers and join them with stitching. Website: bethaten.com or studiodays.wordpress.com.

Plume



Kelly Green Barter, The Kelly Green Gallery at the Surface Artist Cooperative

Collage

Plume is an 11 x 14 giclee print on archival Hahnemuehle 100% cotton rag photo paper.

The particular version is a one of a kind signed artist's proof.



A midwestern native, Kelly Green Barter obtained a Masters Degree in Fine Art Photography from Eastern Michigan University in 1992, though she has truly been an artist all her life. She devours opportunities to create her personal collage art and philosophically believes art should live all around us and be integral to everyday life. With that artistic tenet at her core, Kelly commissions home and business murals, interior and future recreation and home and business design ideation.

Website: www.thekellygreengallery.com or www.surfaceartistcoop.com.



Moss Covered Rock and Stream



Robert M. Baumbach

April 22, 2009, Digital Photograph

Slow exposure close-up of a moss covered rock isolated by water in the small stream flowing through Shingletown Gap.

Bob is a retired art teacher from State College. He teaches classes in digital photography at the Art Alliance of Central PA and is on the Board of Directors as the Adult Education Chair. Bob also paints Italian Street Paintings at the Central PA Festival of the Arts and freelances in both art and photography, having completed murals for local clients and photography for the *Good Life* magazine. Website: www.rbaumbach.com.



Felt cards, eyeglass case, & small pocketbook &

Lisa Baumgartner

2009; Wool & Silk

Each piece is unique, created using merino wool, silk, wool locks, yarn, beads, and buttons!

Felt-making has been a joyful presence in my life for the past seven years. The process started out with colorful piles of Merino wool, small mounds of curly, jewel-toned sheep locks, shimmering hanks of silk and a dazzling assortment of beads... and then, to end up with felt pieces that each have a feeling and message of their own, is nothing short of magical! Each piece is a one-of-a-kind and often the colors, textures, and mood of the piece can serve as an affirmation of something we long to bring into our lives. Enjoy! Website: www.heartfelcrafts.biz/heartfelcrafts/felting/felting.html.

Krasnyee



Joseph Zygmund Bazerque

1995; Oil on canvas

Line. Some are structured, some are loose, and others are free. Through line(s) one sees all things in life.

Graduate of Penn State University with a degree in Fine Arts. Studied under Santa Barazza. Exhibited in various group shows in Pennsylvania and New Jersey and solo shows at the HUB Galleries at Penn State and the Victoria Gallery in Jersey City, New Jersey. Joe is in the permanent collections of the American Cancer Society, Centre Region and Saint Mark's Lutheran Church in Millheim.



Untitled



Stacie Bird

November 2009; Color Photograph

This photo was taken on campus during a lovely November, made all the more glorious by a dreary October.

Stacie has been a photographer since she was given a camera to “keep me out of trouble” during my parents’ bird watching expeditions. Stacie worked for the College of Ag Sciences in photography, communications and/or E-learning since 1989. She and her husband Jim live in a former one room school house near Shingletown.

Swamp Rose Mallow



Judith Bogert

2007; Watercolor

Walking in woods and marshes is always a pleasure, but finding wildflowers tucked into unexpected corners increases the joy just that much more.



After retiring from Penn State in 1999, Judith began painting at the Art Alliance of Central Pennsylvania. Since then, she has been privileged to show her work in juried shows such as the PA Festival of the Arts Images Show and the Three Rivers Art Festival, as well as in public spaces throughout the state. More of Judith's work can be seen at the Gallery Shop in Lemont.

Holiday Tree



Pernille Sporon Boving, Boomerang Glass Art at the Surface Artist Cooperative

Fused Glass

The tree is made from fused glass pieces, brass stem and 100% rubber stand (hockey puck)

Pernille has worked in the fused glass technique since 2003, continuously exploring the medium, its limits, but more interestingly, its endless possibilities. Her ties to her home country of Denmark are a strong source of inspiration. It is also there where the first classes in fused and glass bead making were born. Her background as a behavioral ecologist working in the arctic, works as an inner engine thriving for the peace and equilibrium found there, trying to infuse that into her art glass. Website: BoomerangGlassArt.com or www.surfaceartistcoop.com.



Solitude



Rebecca Brooks

November 2009; Fabric

I learned this technique last summer from Jo Diggs, who also inspired me to create this piece. The Frame Factory and Gallery donated the mat. My husband Rob made the frame.

I took up quilting in college, when my mother gave me some fabric scraps from dresses she'd made for my two sisters and me when we were growing up. I've been creating with fabric off and on ever since. It has only been in the recent past that I have been landscape quilting.

Woodcock On Nest With First Hatching



the late Bob Butler

October 1986; Wild Black Cherry

This bird found nesting in wet areas is so well camouflaged against the background of ground cover that it is difficult to locate. Here the female has hatched her first hatchling and from what is known about the age of young chicks by measuring the length of the bill, the chick is in its second day.

Robert Butler was a retired professor of the Pennsylvania State University. He received his B.A. from Park College and received his B.S., M.S. and Ph.D. from the University of Minnesota. Demonstrations and exhibitions of his work have been featured in many Central Pennsylvania Arts Festivals, and his work was also shown at Penn State's Kern Graduate Center and Pattee Library. Butler also taught wood sculpture for more than 25 years in the State College School District's Adult Education classes. As a member of the National Woodcarvers Association, he published several articles in their bimonthly journal, *Chip Chats*. In 1974, he published a book titled *Wood for Woodcarvers and Craftsmen*.



Breakfast in Bed



Bob Carline

November 2009; Clay

Bob Carline is a retired fisheries biologist who has been sculpting hardwoods for more than 15 years, and more recently, he began working in clay.



Rhododendron



the late Rae D. Chambers

Pen & Ink

Rae was a graphic designer and botanical illustrator at Penn State University. From 1973 – 1981 she illustrated a series of newspaper columns in the *Centre Daily Times* about local plant life. Those illustrated columns, written by naturalist Harrison H. Arnold, were collected in a book, “Root, Leaf, Bud and Berry—a collection of plants from central Pennsylvania”, published in 1993 by the Centre County Historical Society. Donated by: Scot and Charlene Chambers.

Harvest Time at Mount Nittany



Kathleen Chovit

November 2008; Oil on Canvas

Passing this farm daily, I am spellbound by its changing moods, light, crop rotations and contours. I created this painting a la prima in my studio from field sketches, memory and photographs last November. Painting with knives, I use Schmincke-Mussini oil paints, which have a high pigment load, luminosity and technical properties which will preserve the longevity of this painting on archival canvas. A final dammar varnish provides protection from ultraviolet light and dust.



Kathleen is a local painter and enthusiastic supporter of ClearWater Conservancy’s efforts to preserve and protect the land and waterways. She strives to capture landscapes with unobstructive vistas within Happy Valley. She is a member of the Art Alliance of Central PA. Her landscapes and figurative works of women have been displayed in many juried shows.



Mountain Laurel Tablerunner



Nancy Christy

July 2008; Cotton

To honor the state flower of Pennsylvania, I created a pieced mosaic of fabrics to mimic the Mountain Laurel design. The center of the runner contains 296 tiny blocks that make up the design. Hand-quilting holds the layers together. The piece is 12” x 50”.

Nancy has lived in PA all her life and has been doing pieced linens and quilts for over 25 years. She is an elementary teacher by profession. Along with her sister, she has participated in the Central PA Festival of the Arts for 18 years.

Tussey Mountain



Matt Dallos

2007; Photography

Photographed along Tussey Mountain between Shingletown Gap and Musser Gap. The late afternoon sunlight was illuminating the trees along the lower ridge.

A native of central Pennsylvania, Matt grew up surrounded by the Appalachian mountains. When not out in the wilds searching for his next photograph, Matt can be found outside biking the local singletrack in the summer and traipsing about on his skis during the colder months. Website: www.mattdallos.com.





Clear Water

&

Michael Dietz

2009; Recycled Copper and Glass

The piece uses 5 cups of water. It is made from recycled materials.

Michael Dietz is a self taught artist who uses recycled materials to create art with a nature theme.

Mount Nittany from Afar & Three pair of fused glass earrings

&

Dorothy Durrenberger

Oil on canvas

Dorothy saw this view coming back from Altoona – the scenic route. She felt how lucky we are to live in this place.

Dorothy's works have been displayed at many juried and solo shows and are in collections in this country as well as abroad. She is an artist, painter, print maker, and jewelry maker.



Sunset necklace

&

Staci Egan, Contempo Jewelry Designs at the Surface Artist Cooperative

Jewelry

The inspiration of this piece was the sunset. Staci hand wire worked several semi-precious stones and freshwater pearls with sterling wire.



I have been a jewelry artist for close to 10 years, my background includes a mix of workshops and self-taught methods. Besides selling online, I sell in local boutiques, galleries, stores, and art shows including the Central PA Festival of the Arts. I am a member of the Art Alliance, the Central Pennsylvania Guild of Craftsmen, and a committee member for the Gallery Shop in Lemont. I specialize in Bridal pieces and am always open to make custom pieces upon request. Website: www.contempojewelry.net or www.surfaceartcoop.com.

Two Nested Cherry Bowls

&

Jim Finley

December 2009; Wood

These bowls were crafted from a fallen black cherry tree on our property near Ridgeway, PA in Elk County.



Jim is a professor of forest resources at Penn State and is the state extension forester. He enjoys woodworking of all types and likes creating wooden objects for both their beauty and utility.



Fish Hook



the late Rob Fisher

1995; Bronze cast (lost wax)

Fish Hooks by internationally known Pennsylvania sculptor Rob Fisher (1939-2006) are unique functional works of art. Individually sculpted and cast in bronze or stainless steel using the lost wax process, the fish sculpture was initiated by the artist. They may be collected in "schools" on a wall as purely artistic expression or may be used for hanging clothing, towels, or plants. This playful work of art will appeal to the naturalist, the sea-side or lakeshore dweller, the fisherman, the home decorator, and children who will be able to create their own "school" of fish in their rooms.

This small sculpture is distinctly different from Rob's large scale computer designed suspended sculptures that were commissioned for hotels, office buildings, medical centers, and airports in Japan, China, and throughout the United States. Rob's artwork was inspired by natural forms and imagery, yet rendered in industrial materials. His daughter, Talley Fisher, continues to operate the studio and honor her father's legacy. Website: www.robfishersculpture.com. Donated by Talley Fisher.

East Field – Hameau Farm



Holly Fritchman

November 2008; Oil

Hameau Farm in big valley is central Pa's Giverny of sorts. An art retreat – an artist inspiration.



Bio: Holly is self-taught in oil, watercolor and pencil/ink.

She has botanical art at the Humboldt Institute gallery and numerous commissioned pieces. Holly had the honor to be juried into membership at the Philadelphia

Sketch Club this year. PSC is the oldest art club in the country with the fingerprints of men like Wyeth, Moran and Frost honoring their front door. Holly is also a member of the Art Alliance and the Bellefonte Historical and Cultural Association gallery committee. Holly exhibits her work locally and in juried shows in PA. One of her pencil drawings of wetland plants was chosen as the book cover published by the US Army – CRREL this year.



Snowy Mountains



Jean Giddings

February 2008; Fabric Collage

Jean has been doing her art for over 30 years. She has had an ongoing interest in using natural materials and images throughout her life as an artist.

Oak and Acorn Bowl and Charger



Charles Hughes

November/December 2009; Stoneware

Charles Hughes is a lifelong resident who operates a full time pottery studio out of his home on the corner of Route 550 and Skytop Mountain Road. He is pleased to be the supplier of handmade mugs to Webster's Café and Bookstore. Website: www.hughespottery.com.



Loon

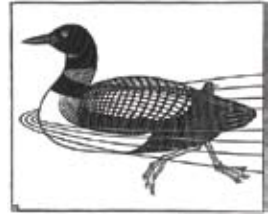


the late Jacques Hnizdovsky

1985; Woodcut

The works of critically acclaimed painter and printmaker Jacques Hnizdovsky (1915-1985) were on view at The Ukrainian Museum in New York City from June 11 to November 12, 2006. Titled Jacques Hnizdovsky... In Color and in Black & White, the exhibition showcased a body of work by the artist

spanning a nearly fifty-year career that had its origins in Ukraine and culminated in the United States. Website: www.hnizdovsky.com. Donated by Kay Leitzinger.



Ocean Freeform



Lee Anne Jeffries, Lovely Mud Pottery at the Surface Artist Cooperative

November 2009; White Stoneware Clay

I am continually inspired by nature! This piece, in particular, was inspired by the ocean and my love of sea life.

Lee Anne has a Bachelors Degree in art from Penn State University. It was while living in Maryland that she refined her craft and passion for working with clay. She is inspired by vivid color and bold design.

Website: www.lovelymudpottery.etsy.com or www.surfaceartistcoop.com.

Earrings



Corene Johnston

Copper, Sterling, and Freshwater Pearl

Surface is stabilized with acrylic spray to protect the oxidation of sterling silver wires.

Certified registered nurse practitioner, certified grief counselor, Reiki practitioner, silversmith, free lance writer, cancer survivor, kitchen table counselor, friend to animals.



Flexible Flyer



Ruth Kempner

2005; Watercolor Giclee Print 1 of 1

Ruth Kempner was born in New York City. She is a fine arts graduate of Cooper Union and attended additional courses at New York University, Yale University, Pennsylvania State University, and the Rhode Island School of Design. She has achieved national recognition as an accomplished artist and has won numerous awards. She is a signature member of the Pennsylvania Watercolor Society and an active member of the Art Association of Harrisburg, Art Alliance of Central Pennsylvania, and the Susquehanna River Art Center. She continues to exhibit and sell her work in juried shows, galleries, and commercial locations including the Gallery Shop. Ruth also teaches workshops on collage and assemblage at the Art Alliance of Central PA in Lemont. She maintains a studio gallery in State College, which may be visited by appointment.



Leaf and Tendril Pendant



Aileen Lampman

Sterling Silver and 14k Gold Filled

Also known as the "G20 Necklace". This necklace was part of a gift given from the city of Pittsburgh to each of the heads of state attending the G20 Summit in

Pittsburgh. The necklace was intended for the spouses, to include Michelle Obama.

Aileen has a bachelor of fine arts degree from Edinboro University, apprenticed as a bench jeweler at A.U. Jewelers in Hershey, and established her own company, Ai Jewelry, in 1997. Handcrafted from 14k gold, 14k gold filled and sterling silver wire and sheet, Aileen's designs are inspired by leaves, flora and landscapes, Georgia O'Keeffe paintings, ancient Egyptian art, and even something as small and insignificant as a ringlet of hair. Never one to take the small details for granted, she hand-forms, hammers and solders each piece of metal. Aileen's jewelry can be found locally at The Gallery Shop in Lemont. Website: www.aijewelry.net.

Big Valley, Morning Light



Karl Eric Leitzel

2008; Oil, plein air

Location is at Hameau Farm near Belleville. Painted during the annual May artists' retreat.

Long-time Penns Valley resident. Founder of Landscape Artists International (<http://l-a-i.com>). Member of Farmland Preservation Artists of Central Pennsylvania.

Karl was the official Artist-in-Residence for the 2008 and 2009 Centre County Grange Fair, where he documented this unique event of living Americana through his art. In 2009, Karl was selected by Penn State to paint a large new commissioned piece, "Change of Classes", which is now hanging in the lobby of the Nittany Lion Inn. Website: keleitzel.com.



Mount Nittany Cross



Nabil K. Mark

June 23, 2009; Photography

To me, being in nature evokes a closeness to God, and this photograph captures that relationship. Uniting a religious symbol with this mystic mountain creates a harmony of spiritual energy between the divine and the natural.

Nabil is a local who grew up in State College and graduated from State College High in 1991. He then went to the University of Texas at Austin, earning a degree in Photojournalism. Nabil has his own photography business as well as working at the *Centre Daily Times*. Website: www.nabilmark.com.



Double Marbled Silk Scarf



Diane Maurer

October 2009; Acrylic marbling on silk

The scarf was marbled several times to produce a unique silk painting.

Diane Maurer's paper and fiber art has been exhibited in galleries and museums in the United States, Scotland, France, Sweden, Holland and China. Her work is represented in the collections of the Cooper-Hewitt Museum, the Nelson-Atkins Museum, the Dutch Royal Library and the Museum of Antiquities, Urumchi, China. Commissions include designs for Lenox China, Godiva Chocolates and Harper Collins Publishers. She is the author of twelve books, has taught surface design techniques throughout the United States, and has made guest appearances on the Carol Duvall Show, Home Matters and Martha Stewart Living Television. Website: www.dianemaurer.com.

Hameau Stream



Sharon McCarthy

2003; Watercolor

Sharon is an active member of the Centre County Farmland Preservation Artists and serves on the Board of Directors of the Central Pennsylvania Festival of the Arts. She is also a member of the Central Pennsylvania Pastel Society, the Art Alliance of Central Pennsylvania, and the Bellefonte Historical and Cultural Association, where she helps to coordinate the gallery at The Gamble Mill.



Trio of Vases

Mark D. Messenger

2008; Stoneware

The blue and purple in these pieces is from rutile and iron oxide as colorants in the glaze. Fired at 2300 degrees F in a reduction kiln.

Mark Messenger received a B.A. in visual arts from New England College where he concentrated in printmaking and ceramics. He also earned a M.F.A. in sculpture from Penn State. He taught at the Silvermine Guild School of Art, the Penn State University, the Art Alliance in Lemont, PA, and in the State College Continuing Education Program. His work is shown extensively in the northeast and is prominently featured each summer at the Central Pennsylvania

Festival of the Arts. In addition to pottery, Mark enjoys being creative with pastels, watercolors and photography.

Sphinx & Moth



Linna Muschlitz

2009; Hand painted silk

I loved silk painting the moment I put my dye-filled paint brush to the blank silk. As a lover of color and pattern, painting on silk with colorful concentrated French dyes is the perfect recipe for instant gratification.

Linna has returned to State College after living in Eugene, Oregon. There she was active in the community arts—teaching workshops, building “nests” inspired by nature’s artistry, working in the clay studio, and painting on silks. In State College, Linna is just beginning to explore creative options.





Embers



Roxanne Naydan

2009; Oil

Painted on a late afternoon day of flooding in Boalsburg.

Roxanne Naydan earned a BA in visual arts and art history from Kean University, a Masters in painting and printmaking from William Paterson University, and a teaching certification from Penn State. As a graphic designer, she has illustrated Ukrainian poet laureate Lina Kostenko's book, *Selected Poetry of Lina Kostenko: Wanderings of the Heart* (Garland Publishers, 1990). Roxanne currently exhibits works in group and juried shows and is a member of the Farmland Preservation Artists and The Central Pennsylvania Pastel Society.

She enjoys painting outdoors with her friends as well as participating in plein air painting workshops.

View From Belleville Airport



Susan Nicholas Gephart

2003; Pastel

This pastel was created following a painting workshop I taught at Hameau Farm in Belleville. The rolling fields were topped with beautiful clouds that day. A reminder of how fortunate I am to be a painter of the skies and the Earth!



Susan Nicholas Gephart is a 1979 BFA Graduate of Pennsylvania State University who has been painting award winning landscapes for 30 years. Susan has displayed her art in such shows as The Pastel Society of America, The Art of the State of Pennsylvania, won Best of Show in the Central PA Festival of the Arts, and is in the permanent collections of The Penn Stater Conference Center and the Southern Alleghenies Museum of Art. In 2007 she was inducted into the Montgomery County Community College Alumni Hall of Fame, where she and her father will have an exhibition together in June 2008. In 2009 Susan had a solo exhibit entitled "Focus on The Landscape" at Penn State, HUB-Robeson Center Gallery. Susan's deep appreciation of the earth can be seen in her colorful impressionistic pastels and oils. As an artist she is committed to the idea of bringing art to the public and creating environmental awareness through her landscape paintings. Website: www.snicholasart.com.



The Dream Point



Leeshaun Ott-Musick

Soft Pastel

This little pastel jewel is dedicated to Leeshaun's daughter, Jessica Alessandra Zerilla-Musick White and donated in her honor. As with all of Leeshaun's pastels, this work captures the ethereal essence of the earth's unspoiled landscapes. Each pastel is done exclusively with the Sennelier pastels, imported from France and first commissioned by the famous artist, Degas. Owning one of these pastels will surely contribute to bringing peacefulness and serenity to your personal environment for many years to come.

Leeshaun Ott-Musick was born to a family of successful artists whose work appears in great American collections such as the Rockefeller Collection and Sloan Collection. Leeshaun's work was first recognized state-wide in the seventies upon receiving an award for her drawings. Notably, Leeshaun's most recent pastel is part of the Lawrence Collection and is permanently housed in the Embassy in France.

Spring Bliss: Salmon

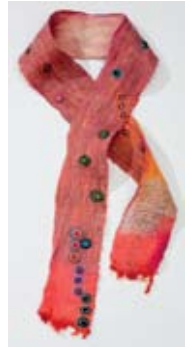
&

Ann Seltzer Pangborn

Handfelted Merino Wool and Silk

I use the word "Bliss" in titles of felted work featuring the handmade dots I love to craft, because the process is so delightful. This versatile scarf measures about four inches by 64 inches; it is made of three layers of fiber in which I've blended Merino wool with some silk. It may be gently hand-washed.

Ann's art background includes a Masters in Creative Arts Education; many years as a professional "pen and ink" illustrator; and national certification to practice Expressive Arts Therapy. Feltmaking and teaching this craft synthesize so much of what I love to do, to express, and to share with others! Ann is a member of The Gallery Shop in Lemont. Website: www.woolyblissfeltmaking.com.



Stoneware Vase with Pete's Black Glaze

&

Scot Paterson

Stoneware

Bio: Scot Paterson has been making functional art pottery and selling it in his gallery in Aaronsburg since 1992. He finds that connection with those who choose his pottery enhances the experience of creating it. Website: www.aaronsburgpottery.com.

Chili Pepper Box

&

Jennifer Philippoff

2007; Mixed clay, wood, and acrylic

Whimsical boxes inspire smiles!

Jennifer Philippoff has been an active member of the local arts community for over 25 years. She creates a line of whimsical painted sculptural art boxes, furniture, and mirrors. She also offers custom framing services and manages the Gallery Shop in Lemont. A longtime "valley" resident, she loves this area because the air is clean, the eggs are fresh, and the spirit of the arts and community is alive and growing. LIFE SHOULD BE FUN!



Oolitic Chert Pendants

&

Mark Ralston

2008; Stone & Sterling Silver

The stones were found near Beaver Stadium.

Mark Ralston is a member of ClearWater Conservancy and a volunteer member of the Spring Creek Watershed Community's Water Resources Monitoring Project. A geologist by day, the name of Mark's jewelry business, Yellowstone Jewelry, is taken from the source locality for Montana agate - the Yellowstone River basin from Wyoming across Montana to the North Dakota border. Montana agate and some of the other agates and jaspers of the northern Rocky Mountains and Great Plains states are prominent in Mark's work, since he and his wife rock hunt on most of their vacations. Website: www.yellowstone-jewelry.com.



Emily Dickinson Quote



Joy Rodgers-Mernin, The Nittany Quill

Calligraphy

The Nittany Quill has been a memorable State College experience since 1984. The fine collection of calligraphy quotes and poems embellished with illuminated letters and garden flowers will soothe your soul and lift your spirits. Our collection of framed calligraphy prints and memory books are designed by Joy Rodgers-Mernin. Website: www.thenittanyquill.com.



Greenman



Rowan Rose

December 2009; Glass

Spirit of the woods and guardian of nature, the Greenman embodies the forces of growth, strength, and rebirth.

Rowan Rose has been creating and selling her art for over 17 years.

Her stained glass work focuses on the divine feminine, elemental, or shamanistic beings. Rowan is the Executive Director of The Creative Oasis, Centre County's largest public, non-profit art studio.



Turtle, Rainy Cake, Ontario – Homegirl

Series



Harriet M. Rosenberg

Photograph

This photograph is one in my "Homegirl" series of self-portrait silhouettes taken in places and settings that I consider "home"—physically, emotionally, and spiritually.

Harriet M. Rosenberg is a part-time instructor in visual arts at Penn State Altoona and a rostered artist with Galaxy CIU #10 and the Southern Alleghenies Museum of Art. She is currently designing the sets and costumes for the State Theatre's presentation of "Praise the Egg" a musical about chickens and eggs by Mary Gage. Website: HarrietMRosenberg.com.

Cherry Tree on North Oak



Lori Savage

July 8, 2009; Watercolor

Every year, we wait for the cherry trees across the street from our home to blossom and to mature so that we can taste the berries. Every child who walks by these trees finds a fresh treasure. It might be a budding limb to clip and take home to force blooms, a sour cherry, a sweet cherry, or just a limb to swing from.



Growing up in Altoona, Lori studied art with local artists Jane Decker and Cynthia Ake. They both invited children into their homes to introduce them to art. Lori is happily carrying on that tradition and has fourteen students coming to her home every week to learn about the wonderful world of art.

Fisher Farm Vista



Jennifer Shuey

2009; Pastel

This view is from a high spot of Barbara and John Fisher's conserved farm, looking down the Buffalo Run Valley toward Bellefonte along Bald Eagle Ridge.

Jennifer Shuey is the Executive Director of ClearWater Conservancy and has a B.S. of Landscape Architecture from Penn State University. As an artist, Jennifer is particularly interested in capturing the beautiful landscapes of central Pennsylvania and engaging more people in their protection. Jennifer is a member of the Art Alliance of Central PA, the Central Pennsylvania Pastel Society, and the Farmland Preservation Artists of Centre County. Jennifer has an upcoming solo exhibition at the Bellefonte Museum for Centre County in the spring of 2009. Website: jennifershueyart.247exhibits.com.



Chocolate and Vanilla Delight



Sheena Sovich, Greyt Bedazzlies by Sheena

December 2009; Jewelry

This Sterling Silver wrapped Agate gemstone is a peaceful blend of chocolate and vanilla. These colors together are rich and pleasing to the eyes and together in a recipe are delicious! The chain is a 18" Sterling Silver Figaro. Enjoy wearing this original design by Sheena for the "Love of Art & Chocolate"!!

Sheena has been designing jewelry for over six years. She has evolved to a designer who loves working with gemstones, crystals, and wire. Sheena feels each gemstone has its own beauty, and she allows the gemstone to speak to her before she enhances its beauty with wire sculpting or wrapping. She loves the challenge of not repeating a design and feels she shouldn't have to, since God has blessed this earth with many different gems, crystals, and beads. All women love a one-of-a-kind beautiful piece of jewelry!

Sayers Winter 01



Bill van den Berg

November 2008; Digital photograph. Panasonic DMC-TZ5 point-and-shoot camera.

This is the view from the top of the levee around Howard, looking southwest across Sayers Lake toward Milesburg. The Howard Boat Club jetty can be seen on the left. In the very center is the old railroad line that was submerged by the creation of the lake. At the extreme right, on the opposite shore, one can just make out the Lower Green's Run launch area.



Bill van den Berg moved to Howard in 2007 to be near the lake he has windsurfed on since 1997. He wears his camera on his belt wherever he goes, photographing whatever seems beautiful or interesting. Bill will have a collection of photographs on display at the Elk Creek Café starting on June 1.



Mountain Snow



Lisa Dawn White, Full Moon Flower Farm Designs

Spring 2009

Mixed hand-made paper, watercolor, acrylic, and botanical specimens

From my "Big Medicine" series of works inspired by the Rocky Mountains, this piece contains skeletonized leaves collected in the fall of 2008 after the gypsy moths had finished with them, brilliant blue delphinium flowers, and pale crème hydrangea inflorescences.

Lisa Dawn White (Full Moon Flower Farm Designs) is inspired by nature and its expression in the landscape. By incorporating a variety of botanical and organic elements, along with watercolor, acrylic, pastel and home-made papers, Lisa's botanical collages offer a contemporary interpretation on an ancient form of art. A whimsical interpretation of nature is one of the most important elements in each of her pieces. Website: www.fullmoonflowerfarm.com.

Fault Blocks and Sky



Chris Woodard

May 2009; Cotton Fiber

This piece is made up of units of patchwork which have been offset to mimic the faulting of rock layers. The 13" x 16" piece is hand quilted.

Chris is a Pennsylvania native but has lived in Colorado, Wisconsin, and Maryland before returning to her Pennsylvania roots. She was a full-time quilter while raising her daughter and participated in the Central Pennsylvania Festival of the Arts for eighteen years. She now works for the US Fish and Wildlife Service helping to preserve Pennsylvania's beautiful streams.



Baby Seals



Cheri Lee Yarnell

2009

Handmade and individually sculpted porcelain

I create these pieces out of concern for the welfare of seal pups and in opposition to the Canadian commercial seal slaughter, which is a cruel and horrific practice.

Cheri Yarnell is a local potter who has been making pots and other porcelain creations in her studio in Potter's Mills for about 20 years. Many of her individual pieces reflect her concern for endangered or imperiled species.

Copper Table with
Flagstone or Glass
Top
&

David J. Ziegler

2009

Metal

Dave is the owner of Blackhawk Homestead Nursery and specializes in design and construction of water gardens, fountains, rain water harvesting systems, aquatic plants, native plants, and fish ponds.



Additional Silent Auction Items

- & **Dinner for Two at Spats Café & Speakeasy, all you can enjoy that evening excluding beverages - Donated by Duke Gastiger.**
- & **Custom-built Muzzleloader - Donated by John Fulmer.**
- & **Two tickets to event of choice in the 2009-2010 season of the Center for the Performing Arts at Penn State.**
- & **Laga Handbag - Donated by Jill Lillie on behalf of Altrusa International of Centre County.**
- & **The Art of Relaxation Gift Basket from the Center for Well Being including two half-hour massage certificates - Donated by Cecilia Mills.**
- & **Gift basket of Kenra hair products and a gift certificate to the Lipstick Salon and Color Lounge - Donated by Tracy Serrell.**
- & **A two-hour on-location photographic session plus a 16" x 20" fine art gallery wrapped canvas donated by Jessica Ames Photographic – where life meets art.**

Special Raffles

Tickets available for \$10 each. Winners will be drawn at 9:30 pm.

Tussey View Farm

Jennifer Kane

2009; Original 30" x 40" Oil on Canvas

Tussey View Farm is Jennifer's third painting in a continuing series of images of ClearWater's conserved lands. The painting process included sketching, painting and photographing the subject on location, then creating a larger 30"x40" piece in the studio over the next several months. The finished painting is wired and has painted edges, ready to display.



Jennifer Kane is a professional landscape and portrait artist and painting instructor. She grew up in the scenic Shawnee National Forest area of southern Illinois. Her education includes a BFA in Painting and an MFA in Theatre Design from the University of Illinois Urbana/Champaign. Her work is collected internationally, and has appeared in many regional juried shows and exhibits, including the Art of the State show in Harrisburg and the Central Pennsylvania Festival of the Arts. Jennifer's work is on permanent display at the corporate headquarters of the Knight Foundation in Miami, FL. Also, she was chosen as the first place artist in oil painting for the book, "Best of Artists: Pennsylvania". Website: www.jenniferkaneart.com.

DESERT



RUG COMPANY LLC
814.237.4071

Authentic 10' x 7' Persian Rug

Desert Rug Company

Persian rugs are durable art for the floor. Each Persian rug is made by hand and not machine-made. Rug making began in the Babkhtiari region thousands of years ago, and the people who make these rugs take great pride in their creations. Persian rugs are the world's "gold standard" of rug making, copied by other countries, but not equalled. With 75-1,000+ knots per square inch, Persian rugs are virtually indestructible. By using an electric sweeper and spot cleaning spills with a mild detergent, your Persian rug can last for multiple generations.

Desert Rug Company was founded in 2004 to provide a direct connection between manufacturers of rugs in Iran with American consumers. Despite the fact that Americans appreciate the beauty and quality of Persian rugs, many rugs made in Iran are difficult to come by and are very expensive, out of the reach of ordinary people. However, weavers of Persian rugs are very poor. Our goal is to offer high quality Persian rugs at affordable and fair prices, promote manufacturing of old Persian designs, improve the quality of rugs by providing weavers with high quality materials and financial support, and gain back consumer confidence by providing necessary warranties. We hope to make it possible for everyone to have a Persian rug. Website: www.desertrug.com.

To our supporters!

Thank you for joining us this evening and supporting our work throughout the year! Our members, sponsors, and volunteers are the backbone of this organization and share in our conservation successes.

In 2009 we worked with Fred Strouse to conserve Tussey View Farm, a beautiful property on Tussey Ridge east of Boalsburg where the headwaters of the main stem of Spring Creek emerge. With the completion of this project, our total acreage conserved is now over 4,500.

Looking ahead to 2010, we intend to close on the first parcel in the Barrens to Bald Eagle Wildlife Corridor this spring. The Wildlife Corridor is important because it is the last remaining connection between the Scotia Barrens and the Bald Eagle Ridge ecosystems. We also have several conservation easement discussions and riparian restoration projects underway to protect and enhance our priority natural resources. Our Conservation Action Plan for the Nittany Valley is the framework for our land conservation, riparian stream buffer restoration, water monitoring, watershed cleanup, environmental outreach and education, and other key projects not only in this year, but for many years to come.

Conservation of the unique biology of the Spring Creek Canyon continues to be one of our highest priorities. We are working with key decision makers to ensure that any and all prospective new owners on that sensitive property commit to managing the land for the site's rarity. We continue to insist that conservation easements be a requirement of each landowner to hold them accountable.

Our success on these bold conservation initiatives depends on people like YOU! If you just got your first "taste" of ClearWater Conservancy this evening and are not yet a member, please join us in protecting what matters most in central Pennsylvania. Invest in natural resource conservation with a major pledge to our "Operation Conservation" to help us acquire the Barrens to Bald Eagle Wildlife Corridor, and come out to our many events to be a part of a community dedicated to the protection of our precious land and water resources.

Upcoming events in 2010:

- April 17 – 14th Annual Watershed Cleanup Day
- April 23/24 – Beatty Memorial Arbor Day Tree Plantings
- May 9 – Adventures in Conservation program: traditional Mother's Day Wildflower Walk at The Rock
- May/June (tentative) – 2nd Annual Patagonia Wild & Scenic Film Festival
- August 30 – Otto's Golf-Fest
- October 3 – Adventures in Conservation program: Spring Creek Day Family Festival at Millbrook Marsh Nature Center

Check the event calendar at www.clearwaterconservancy.org for more events and more details!



OPERATION CONSERVATION Barrens to Bald Eagle Wildlife Corridor

ClearWater Conservancy is working with the community to complete a critical conservation project: *Barrens to Bald Eagle Wildlife Corridor*. A pocket of ecological treasures, the Scotia Barrens is an exceptional ecosystem of rare natural community types. Many of the wildlife species which call the Scotia Barrens home would disappear from the region if the barrens habitat were lost. Because of its close proximity to the growing community

of State College, residential development threatens to consume large pockets of this rare habitat and isolate it from other nearby nature areas. To balance this growth and to maintain our community's sense of place, ClearWater Conservancy has initiated the *Scotia Barrens Conservation Project* to prevent isolation of Scotia Barrens from encroaching development, to increase the size of protected barrens habitat, and to educate the community about this valuable resource.

Time is of the essence. There remains only one potential wildlife corridor connecting Scotia Barrens with Bald Eagle Mountain. ClearWater recognized this opportunity and has been working diligently over the past several years to proactively lay the foundations for land acquisitions to ensure that this wildlife corridor is maintained and protected. ClearWater Conservancy now has the opportunity to protect 106 acres of this last wildlife corridor through a combination of land purchase and the Halfmoon Township Open Space Preservation Program (lease of development rights). Protection of this 106-acre property is key to protecting two additional adjacent properties.

Earlier this year, ClearWater Conservancy applied for and received \$367,000 in matching funds from the Department of Conservation and Natural Resources. More recently, in June, Halfmoon Township amended its Open Space Preservation Program, allowing the Township to contribute up to an additional \$200,000 to the project. This leaves \$170,000 for ClearWater to raise to get this project done.

We are three quarters of the way to our goal. Now, we need your help. Please make a pledge today. Visit http://www.clearwaterconservancy.org/land_conservation.htm for more information.

JOIN CLEARWATER CONSERVANCY!

Please consider becoming a member of the ClearWater Conservancy. Your support will provide us with the financial resources we need to raise awareness of watershed issues and protect our critical land and water resources. Your tax-deductible membership is an important way for you to make a difference in the community. Please take a moment to invest in natural resource conservation in central Pennsylvania. Membership forms are online at: <http://www.clearwaterconservancy.org/membership.htm>.



CLEARWATER
conservancy

To our Donors
Thank You!

Dessert Donors
&

Allen Street Grill
Andy's On the Go Café
Bonfatto's
Café on the Park
Cakes for Occasions
Cici's Pizza
Damon's Restaurant
Delectable Delights by Heather Luse
Diamond Deli
Duffy's Tavern
Eat 'N Park Restaurant
Elk Creek Café & Aleworks
Evangelista's
Fonash.Kendeffy Restaurant Group: Zola,
Alto, Gamble Mill
Foxdale Village
Garfield's at Nittany Mall
Gemelli Bakers
Gingerbread Man
Herwig's Bistro

Hoag's Catering
Honeybaked Ham Co. and Café
Ishkabibble Cakes and Cupcakes
Kelly's Steak and Seafood
LePapillon at Toftrees
Nittany Catering
Olive Garden
Otto's Pub & Brewery
Panera Bread
Penn State Berkey Creamery
State College Elks Club
Sweet Indulgence
TGIFridays
The Penn Stater
Tarragon Restaurant at Atherton Hotel
The Tavern Restaurant
WC Clarke's Cheese Shop
Webster's Café on Aaron
Wegman's Patisserie
Whistle Stop Restaurant

Chocolate Confections
&

Boalsburg Chocolate Company
Chocolate Madness
Endangered Species Chocolate
Gardners Candies
Gertrude Hawk Chocolates
Glory's Homemade Fudge
Ishkabibble Sweet Treats
MacIntyre's Candies
The Hershey Company

Beverage Donors
&

Meyer Dairy Store
Cool Beans Coffee & Tea
Starbucks Coffee Company

Catalogue Production & Design
&

Advanced Color Graphics
Cramer Studios Inc. – Bruce Cramer
Patricia Craig
J&A Photography – Joel Knepper
PixelClear Inc. – Jay Mastalerz

Framing / Mounting Donors
&

John McQueary, The State College
Framing Company and Gallery

Many thanks to our sponsors!



The Hershey Company



cramer studio, inc.



ADVANCED COLOR GRAPHICS



Beth Richards



RE/MAX Centre Realty
Mary Lou Bennett, Jacki Rutter,
Cathy Flood, and Steven Bodner



Ritchie Veterinary Hospital
Sound Technology, Inc.
Green Irene by Charlene Chambers
Five-Star Suzuki
Centre County Women's Journal
The Penn Stater Hotel and Conference Center

Telephone: 814.237-0400; www.clearwaterconservancy.org