



ClearWater Conservancy's  
10th Anniversary!

For the of  
Love of  
**ART**  
and  
**CHOCOLATE**

January 23, 2009, 6:30 to 10 p.m., The Penn Stater  
Benefiting the  
ClearWater Conservancy of Central Pennsylvania

# Welcome



Throughout the evening, please enjoy,

Bruce Fleischer, Master of Ceremonies

Music by Jazza-Ma-Phone

Feasting on Chocolate Delicacies

6:30 - 9:30 Silent Auction of Nature-inspired Art

7:45 Clear Water Conservancy Welcome Message  
Jennifer Shuey, Executive Director  
Kelleann Foster, President

8:45 Drawing for Door Prizes

9:00 Raffle drawings: Jennifer Kane Fisher Farm  
Painting, and Persian Carpet from Desert Rug  
Company (\$10 tickets for sale in lobby or at  
the raffle table until drawing)

## *Door Prizes:*

Chili's Grill & Bar—Gift Certificate

Edible Arrangements—Gift Card

Harrison's Wine Country Grill—Gift Certificate

Nature's Pantry—Gift Certificate + Chocolate Bar

Webster's Bookstore Café—Chocolate Cookbook

\$25 Gift Certificate at St. Joseph Institute

"Going Local" by Ken Hull

State Theatre—Four movie tickets

Texas Roadhouse—Gift Certificate

Chocolate Madness

Endangered Species Chocolate

## *A Note of Thanks from the Chairs*

*“There is nothing like a dream to create the future” – Victor Hugo*

Ten years ago, Barbara Fisher had one of those dreams. In 1999 Barbara and a few friends put together the first, “For the Love of Chocolate”. The event, at the Tussey Mountain Lodge, had 110 attendees. Since then the event has grown in leaps and bounds – adding art to the mix a few years back. We have relocated numerous times to accommodate this growth – last year’s attendance was nearly 500!!

This fundraising event is possible by the support of so many people who believe in ClearWater Conservancy and its mission. That generosity starts with our sponsors, highlighted on the back cover. Also special thanks to photographer Bruce Cramer and Pixelclear, Inc., to graphic designer Patricia Craig, and to printer Advanced Color Graphics for creating this beautiful program. We sincerely thank the talented artists who give their creations so enthusiastically – their work is truly wonderful! We also extend thanks to the downtown stores for their window use during First Night State College to display the art and to Lori Savage and Sharon Goss for helping arrange the displays.

As it was 10 years ago, a bounty of chocolate delicacies is ours to savor tonight.

Thank you to all the donors for your generosity and special preparations! (Donors listed inside back cover). We also want to extend a hand of thanks to Dr. Dave Cranage and the Penn State Catering Club students for their time and expertise in arranging and distributing the chocolate. We truly appreciate the help of Beverly Harader, Anita Crust, and Gail Weiser in confirming the food donations, Annie Mascelli for her decorating flair, all door prize donors, Jennifer Kane and Dessert Rug Company for their generous donations for the special raffles, and to all the volunteers who work weeks, days, and the night of the event. This event could not happen without all of you.

And finally, thank you to all attending tonight – we could not be more pleased that you are here to support ClearWater’s natural resource conservation mission while having a delightful evening!

*Holly Fritchman and Kelleann Foster, Co-Chairs*

# Artists

January 1998

Harold Altman



1998, Artist's Proof  
Lithograph,

Professionally double-matted by The State College  
Framing Company and Gallery

Harold Altman was born in New York City in 1924 and passed away in 2003. He attended the Art Students League, the Black Mountain College, the Academie de la Grande Chaumiere in Paris, and was a graduate of the Cooper Union Art School. Since 1962 he lived in Lemont, where a nineteenth century frame church served as his studio. The artist's works have been exhibited at numerous galleries and museums, both in the United States and abroad. He is represented in nearly every significant collection in the world.

New York's Museum of Modern Art owns over forty Altmans while the Whitney and Brooklyn Museums each have over fifty of his works in their permanent collections. His work is to be found in many museum collections outside of the United States, several of which are the Victoria and Albert Museum of London, the Stedelijk Museum of Amsterdam, the Kunst Museum of Basel, the Royal Museum of Fine Arts of Copenhagen and the Bibliotheque Nationale of Paris. Altman has received numerous awards, grants and fellowships. Among them are two Guggenheim Fellowships, a Tamarind Lithography Fellowship, a National Institute of the Arts and Letters Award, a Fulbright-Hayes Senior Research Fellowship for work in France and a National Endowment for the Arts Grant. Website: [www.haroldaltman.com](http://www.haroldaltman.com).



New York's Museum of Modern Art owns over forty Altmans while the Whitney and Brooklyn Museums each have over fifty of his works in their permanent collections. His work is to be found in many museum collections outside of the United States, several of which are the Victoria and Albert Museum of London, the Stedelijk Museum of Amsterdam, the Kunst Museum of Basel, the Royal Museum of Fine Arts of Copenhagen and the Bibliotheque Nationale of Paris. Altman has received numerous awards, grants and fellowships. Among them are two Guggenheim Fellowships, a Tamarind Lithography Fellowship, a National Institute of the Arts and Letters Award, a Fulbright-Hayes Senior Research Fellowship for work in France and a National Endowment for the Arts Grant. Website: [www.haroldaltman.com](http://www.haroldaltman.com).

*Where's The Ice?*

Sylvia R. Apple



2008  
Clay

*Global warming is making it hard for Emperor Penguins to get to the ice and the sea. They have to climb over sharp rocks now. I love these creatures and hate to see them suffer the cuts and exhaustion connected with this change in climate. This mother must teach her baby to live in a much more difficult world.*

Since childhood, Sylvia has enjoyed creating images of nature. She is known for her fiber art, but she also has training in painting and sculpture, which she continues to pursue. Almost all of her art is inspired by the natural world which is so powerful, and yet fragile at the same time.



## Tall Timbers

Beth Aten



Fiber

*I am fortunate to live in a peaceful hollow on the edge of a large tract of Pennsylvania woodland. Here I garden and walk daily in the woods, often using my camera to capture memorable happenstances; the juxtaposition of flower varieties in bloom, intertwining branches on an icy day, or an unexpected bright fungi on craggy bark. I have been translating these moments of beauty into fiber for the last 16 years.*

I begin in the dye studio where I color long lengths of cotton cloth and papers by dyeing, painting, silk-screening and printing using a variety of constructed, found, and antique objects. One piece of fabric may undergo several processes to achieve the depth and saturation of color I seek. On the large felt covered wall in my studio I arrange and rearrange small pieces of these fabrics to create compositions which are then sewn together. Finally, I layer a backing fabric and an interior layer of cotton under the composition and sew~draw lines suggesting landscape elements.



## Orchid

Susan Batcheler



Photography

A long-time resident of State College, Susan holds a communications media degree from Indiana University of Pennsylvania. As a freelance photographer, she has participated in arts festivals in State College, Harrisburg, Altoona, Hummelstown, Indiana, Boalsburg, and Bellefonte. Her work can be found in numerous galleries throughout Pennsylvania.



## Rushing Waters, Shingletown Gap

Robert M. Baumbach



May 19, 2008

Digital Photograph

*Taken while conducting a class on how to shoot streams. Wet day, overcast, 10 second exposure.*

Bob is a retired art teacher from the State College schools. He is currently a teacher with the Art Alliance of Central Pennsylvania and a freelance artist and photographer.



## Untitled framed felt piece Eyeglass cases

Lisa Baumgartner



2008  
Wool & Silk

*Each piece is unique, created using merino wool, silk, wool locks, yarn, beads, and buttons!*

Felt-making has been a joyful (and on occasion, challenging!) presence in my life for the past seven years. The process started out with colorful piles of Merino wool, small mounds of curly, jewel-toned sheep locks, shimmering hanks of silk and a dazzling assortment of beads... and then, to end up with felt pieces that each have a feeling and message of their own, is nothing short of magical! Each piece is a one-of-a-kind and often the colors, textures, and mood of the piece can serve as an affirmation of something we long to bring into our lives. Enjoy!



## Untitled

Stacie Bird



May 2007  
Black & White Photograph

*This was taken in Galway Ireland on an anniversary trip with my husband.*

Stacie has worked for the College of Ag Sciences at Penn State since 1989, recently transferring to the Communications & Marketing Department. Stacie also owns and operates birdworks, selling her fine art photographs and custom made jewelry. Stacie and her husband Jim live in Ferguson Township in a former one-room schoolhouse.



## Pit-fired Stoneware Vessel

Jason L. Bloom



2006  
Stoneware Clay

*The piece was wheel-thrown using stoneware clay. During the drying process layers of slip (fine clay and water) were applied. After each coating the pot is polished with a soft cloth. This build-up of slip, eight to ten layers, creates a very unique surface on the pot. As the piece is fired carbon and fumes from mineral salts bond into the surface. The effect of this technique can be very stunning, flashes of red, green, silver and iridescent oil spots that seem to float through swirling black clouds.*



Jason lives in Julian, PA where he has worked as a production potter at Grandville Hollow Pottery in Julian since 2000. He also produces his own line of functional pottery as well as one of a kind pit-fired vessels under the name Halfmoon Pottery.

## Judith Bogert



*I usually zoom in on my subjects and work large, but on my walks, I have been fascinated by the delicate way nature works in miniature. I decided to try the same technique in a series of wildflower paintings, of which this is one.*

After retiring from Penn State in 1999, Judith began painting at the Art Alliance of Central Pennsylvania. Since then, she has been privileged to show her work in juried shows such as the Central PA Festival of the Arts Images Show and the Three Rivers Art Festival, as well as in public spaces throughout the state. More of Judith's work can be seen at the Gallery Shop in Lemont.

## Arrowhead

Watercolor



## Cazia Bradley



*This hand pulled print is part of a nature inspired suite.*

Part of my motivation to work and share my work is captured by this quote from Joan Aiken: "Reality is in as many layers as the globe we live on itself, growing inwards to a central core of red-hot mystery, and outwards to unguessable space. People's minds need detaching every now and then, from the plain necessities of daily life. People need to be reminded of these other dimensions above us and below us."

## Marizau

March 2008

Stone Lithograph



## Dusk – Black Moshannon

## Rebecca Brooks



2008  
Fabric

I took up quilting in college, when my mother gave me some fabric scraps from dresses she'd made for my two sisters and me when we were growing up. I've been creating with fabric off and on ever since. It has only been in the recent past that I have been landscape quilting.



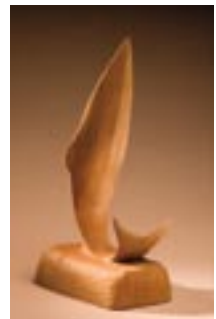
## Bob Carline



## Leaping Trout

November 2008  
Black Cherry

Bob Carline is a retired fisheries biologist who has been carving hardwoods for more than 15 years. He started working with hardwoods in 1992 after taking a course with Bob Butler.



## Plowed Fields

Kathleen Chovit



2006

Oil on Belgian Linen

*This is an original painting on linen, begun on site one sunny fall day and finished in my studio. ClearWater Conservancy has shown that if we set our minds to it, the pastoral landscapes surrounding State College can be preserved, not just as paintings, but in real life. I am pleased as an artist to help with this effort.*

Figures of women are the primary focus of my painting. However, I constantly find myself pulling off the road in a breathless state in an attempt to capture local landscapes and cloudscape. My favorite times of year to chase these scenes are February and November. Painting landscapes allows me to loosen up my technique and paint for the pure joy of it.



## Sunset

Daniel Crust



September 2008

Photography

Dan is a lifelong Centre County resident, a long-time ClearWater supporter and one of our past presidents. He has been an avid photographer for over 25 years. His greatest enjoyment with film is the process of capturing the image that he is seeing at the time into a timeless format.



## A Creekside Year

Matt Dallos



2007

Photography

*I visited this location along Big Poe Creek in Bald Eagle State Forest over a dozen times during the course of a year. In the winter my car got stuck in a snow bank (twice), and during the summer I had to fend off swarms of bugs when I forgot my bug spray. Regardless, this has quickly become one of my favorite locations in Penn's Woods. It was fascinating to witness and record how this scene changed throughout the year.*

A native of central Pennsylvania, Matt grew up surrounded by the Appalachian mountains. When not out in the wilds searching for his next photograph, Matt can be found outside biking the local singletrack in the summer and traipsing about on his skis during the colder months. Website: [www.mattdallos.com](http://www.mattdallos.com).

Michael Dietz



Michael Dietz is a self taught artist who uses recycled materials to create art with a nature theme.

## Water Lily

2003

Recycled Copper



## Near the Middle School V

Dorothy Durrenberger



Oil on Painting Board

Dorothy's works have been displayed at many juried and solo shows and are in collections in this country as well as abroad. She is an artist, painter, print maker, and jewelry maker.



## Wooden Vase

Jim Finley



November 2008

Wood

*The wood is Norway maple which has spalted. Norway maple is a non-native invasive species, so using this wood aids natural plant communities. The vessel base is black cherry.*

Jim was trained as a forester and educator. He finds joy in creating wooden objects for both their beauty and utility. He uses unique local woods in his bowls and other vessels.



## Roots in the Canyon

Holly Fritchman



November 2008

Oil

*With every walk through Spring Creek Canyon, I have been given a gift of wonder. Be it color, reflection, sound, movement, or just the chance to ask a question—like "In all which forces you downward little tree, to give way, to topple, how deep do your roots go to keep you holding on? Who else depends on your strength?"*

Holly is self-taught with a keen interest in botanical art using watercolor, oil, and pencil/ink. She continues to study locally and in Maine. Holly is also the co-chair of this event and was the recipient of the 2008 Volunteer of the Year Award from ClearWater Conservancy.



## Crazy Autumn

Sandi Garis



2008

Fiber Wall-hanging

*My quilts are inspired mostly by my travels in the United States and abroad. Colors and textures in nature, mosaics in Spain, and architecture by Frank Lloyd Wright create seeds of ideas.*

I piece my designs by machine, and then do free motion stitching over the surface. I have been a self employed fiber artist for 22 years. Website: [www.sandigarris.com](http://www.sandigarris.com).



## Paradise

Jean Giddings



August 2008

Collage

*This is a collage of handmade papers with leaf prints and "appropriated images" with acrylic paint.*

Jean has been doing her art for over 30 years. She has had an ongoing interest in using natural materials and images throughout her life as an artist.



## Oak Leaf Bowl

Charles Hughes



December 2008

Stoneware

A long-time local resident raised in Lemont, Charles began selling his work shortly after studying at Penn State University in the early 1990s. He is also a founding member of the non-profit arts center, The Creative Oasis. Website: [www.hughespottery.com](http://www.hughespottery.com).



## Jabebo Earrings Animals Jabebo Earrings Science

Jabebo Earrings – Kevin Abbott



Recycled Cereal Boxes

*The first pair of earrings Kevin made was for his girlfriend (now his wife) when he was in the Peace Corps. She requested that he make her a pair with the sun on one side and the moon on the other. Since then, every pair of earrings he has made has been similarly mismatched.*

Kevin works full-time from his Bellefonte home crafting earrings using recycled cereal boxes. His education is in wildlife ecology and his previous "real jobs" include working as a manatee biologist in Florida, volunteering for two years in the Peace Corps in Kenya, and creating exhibits for the Hands-On Science Center in the Smithsonian American History Museum.



## Farm Near Home in Winter

Alice Kelsey



Pastel

Alice grew up in a rural part of Chester County and graduated from Westtown School. She received a B.A. degree from Hamilton College, focusing on biology and art, and a M.D. degree from Michigan State University. Alice is a full-time painter and lives with her husband and three children near Warriors Mark. Her work focuses primarily on landscapes in central Pennsylvania and has received awards at regional and national shows, including 'Images' at the Central PA Festival of the Arts. She is a founding member of the Farmland Preservation Artists, a group of Centre County artists who promote the preservation and appreciation of open land through their work. Website: [www.alicekelsey.com](http://www.alicekelsey.com).



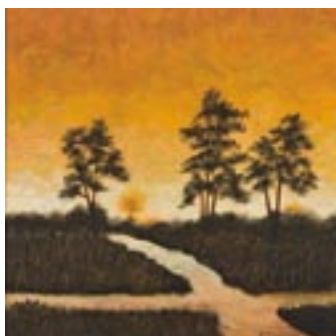
## Fall Sunset

Ruth Kempner



2006

Ruth is a fine arts graduate of Cooper Union and attended additional courses at New York University, Yale University, Pennsylvania State University, and the Rhode Island School of Design. She worked as a textile designer in New York City until moving to Clearfield where she established a studio and taught art to adults and children. In 1997 she moved to State College. She has achieved national recognition as an accomplished artist and has won numerous awards. She is a signature member of the Pennsylvania Watercolor Society and an active member of the Art Association of Harrisburg, Art Alliance of Central Pennsylvania, and the Susquehanna River Art Center. She continues to exhibit and sell her work in juried shows, galleries, and commercial locations including the Artisan Connection and Gallery Shop. Ruth also teaches workshops on collage and assemblage at the Art Alliance of Central PA in Lemont. She maintains a studio gallery in State College, which may be visited by appointment.



## Winter Sunrise Study

Karl Eric Leitzel



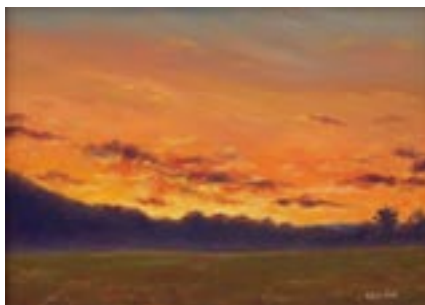
2006

Oil

*Painted en plein air (on site) near Penns Cave early on a mild January morning. The rapidly changing early morning sky required rapid, spontaneous brushwork.*

Long-time Penns Valley resident. Founder of Landscape Artists International (<http://l-a-i.com>). Member of Farmland Preservation Artists of Central Pennsylvania. Karl was also the official

Artist-in-Residence for the 2008 Centre County Grange Fair, where he documented this unique event of living Americana through his art. Website: [keleitzel.com](http://keleitzel.com).



## Hand-printed Silk Scarf

Lynne Maietta



2008

Permanent fabric paint on Silk

*Nature printing is the art of recreating images from the natural world. For this scarf, I collected a variety of leaves and ferns from my woods, painted them with permanent fabric paint, and carefully pressed them to the fabric. The result is a one-of-a-kind, original piece of useable art that embodies the spirit of nature.*

The focus of my art is nature printing on fabric and paper. I also make fish prints. In addition, I love to paint landscapes in watercolor. I have been painting for almost thirteen years and am a member of the Nature Painting Society. Currently, I am president of the Bald Eagle Art League and a founding member of Williamsport's First Friday.



## Musser Gap Ice Storm

A panoramic black and white photograph of the ridge in Musser Gap after a December 2008 ice and snow storm.



## Boalsburg Sunset

A beautiful photograph of the Indian summer sunset over the town of Boalsburg in the fall of 2008.



Nabil K. Mark



Nabil is a local who grew up in State College and graduated from State College High in 1991. He then went to the University of Texas at Austin, earning a degree in Photojournalism. Nabil has his own photography business as well as working at the *Centre Daily Times*. He is also the varsity Track and Field coach at State College High School. Website: [www.nabilmark.com](http://www.nabilmark.com).

## Double Marbled Silk Scarf

Diane Maurer



2008

Marbled Silk

*The scarf was marbled several times to produce a unique silk painting.*

Diane's paper and fiber art has been exhibited in galleries and museums in the United States, Scotland, France, Sweden, Holland and China. Her work is represented in the collections of the Cooper-Hewitt Museum, the Nelson-Atkins Museum, the Dutch Royal Library and the Museum of Antiquities, Urumchi, China. Commissions include designs for Lenox China, Godiva Chocolates and Harper Collins Publishers. She is the author of twelve books, has taught surface design techniques throughout the United States, and has made guest appearances on the Carol Duvall Show, Home Matters and Martha Stewart Living Television. Website: [www.dianemaurer.com](http://www.dianemaurer.com).



## Assorted Notecards

Sharon McCarthy



Reproductions of Watercolors and Pastels



Sharon is an active member of the Centre County Farmland Preservation Artists and serves on the Board of Directors of the Central Pennsylvania Festival of the Arts. She is also a member of the Central Pennsylvania Pastel Society, the Art Alliance of Central Pennsylvania, and the Bellefonte Historical and Cultural Association, where she helps to coordinate the gallery at The Gamble Mill.

## Summertime at Springtail Farms

Roxanne Naydan



July 2006

Pastel

*Roxanne's paintings reflect her love and reverence for nature and chronicle the flow of life.*

Roxanne earned a BA in visual arts and art history from Kean University, a Masters in painting and printmaking from William Paterson University, and a teaching certification from Penn State. As a graphic designer, she has illustrated Ukrainian poet laureate Lina Kostenko's book, *Selected Poetry of Lina Kostenko: Wanderings of the Heart* (Garland Publishers, 1990). Roxanne currently exhibits works in group and juried shows and is a member of the Farmland Preservation Artists and the Central Pennsylvania Pastel Society. She enjoys painting outdoors with her friends as well as participating in plein air painting workshops.



## Evening Light By the Pond

Susan Nicholas Gephart



2007

Pastel

*This pastel was created in the style of "Fast Painting". My kids were all at a campfire, and I slipped away to capture the scene's light and energy before the sun went down. The little cabin is up in Curtin Hollow, and the pond is fed by a mountain stream.*

Susan is a 1979 BFA Graduate of Pennsylvania State University who has been painting award winning landscapes for 30 years. Susan has displayed her art in such shows as The Pastel Society of America, The Art of the State of Pennsylvania, won Best of Show in the Central PA Festival of the Arts, and is in the permanent collections of The Penn Stater Conference Center and the Southern Alleghenies Museum of Art. In 2007 she was inducted into the Montgomery County Community College Alumni Hall of Fame, where she and her father had an exhibition together in June 2008. Susan's deep appreciation of the earth can be seen in her colorful impressionistic pastels and oils. As an artist she is committed to the idea of bringing art to the public and creating environmental awareness through her landscape paintings. Website: [www.snicholasart.com](http://www.snicholasart.com).



## Spring

Leeshaun Ott-Musick



2007  
Soft Pastel

*As with all of Leeshaun's pastels, this work captures the ethereal essence of the earth's unspoiled landscape. Each pastel is done exclusively with the Sennelier pastels, imported from France and first commissioned by the famous artist, Degas. These pastels are known for their light fastness and rich, vibrant color. Owning one of these pastels will surely contribute to bringing peacefulness and serenity to your personal environment for many years to come.*



Leeshaun was born to a family of successful artists whose work appears in great American collections such as the Rockefeller Collection and the Sloan Collection. Leeshaun's work was first recognized state-wide in the seventies upon receiving an award for her drawings. Notably, Leeshaun's most recent pastel is part of the Lawrence Collection and is permanently housed in the Embassy in France.

## Copper Red Stoneware Vase

Scot Paterson



Stoneware

Scot has been making functional art pottery and selling it in his gallery in Aaronsburg since 1992. He finds that connection with those who choose his pottery enhances the experience of creating it. Website: [www.aaronsburgpottery.com](http://www.aaronsburgpottery.com).



## Octopus' Garden

Jennifer Philippoff



2008

Mixed clay, wood, and acrylic

*Whimsical boxes inspire smiles! This box has a secret sea turtle inside.*

Jennifer has been an active member of the local arts community for over 25 years. She creates a line of whimsical painted sculptural art boxes, furniture, and mirrors. She also offers custom framing services and manages the Gallery Shop in Lemont. A longtime "valley" resident, she loves this area because the air is clean, the eggs are fresh, and the spirit of the arts and community is alive and growing. LIFE SHOULD BE FUN!



## Underwater Fantasy

Grace Pilato



Porcelain Sculpture

Grace is an accomplished artist who specializes in white porcelain pottery. She has been producing pottery and sculpture for more than 30 years and is a regular exhibitor at the Central Pennsylvania Festival of the Arts. She is also a gifted Italian chef who finds many ways to feed the soul – through lovingly prepared and artistically presented food, by surrounding herself with art, and through elevating everyday living as an art form.



## Montana Agate & Silver Pendant

Mark Ralston



2007

Stone & Silver

*Linda and I collected the stone in the Yellowstone River Valley in Montana.*

Mark is a member of ClearWater Conservancy and a volunteer member of the Spring Creek Watershed Community's Water Resources Monitoring Project. A geologist by day, the name of Mark's jewelry business, Yellowstone Jewelry, is taken from the source locality for Montana agate - the Yellowstone River basin from Wyoming across Montana to the North Dakota border. Montana agate and some of the other agates and jaspers of the northern Rocky Mountains and Great Plains states are prominent in Mark's work, since he and his wife rock hunt on most of their vacations. Website: [www.yellowstone-jewelry.com](http://www.yellowstone-jewelry.com).



## Medusa

Harriet M. Rosenberg



Original Cut  
Paper Print

Harriet has been crafting art for more than 25 years as a papercutter. She has taught the art at institutions such as Galaxy, the Southern Alleghenies Museum of Art, and Penn State Altoona and is a member of the Guild of American Papercutters. Her work has been exhibited both in Pennsylvania and nationally, as well as having pieces in the permanent collection of SAMA in Loretto, PA. Locally, she has opened her own studio & gallery "Studio 241" in Boalsburg.



## Treasure on the Narrows

Lori Savage



December 2008

Watercolor on gesso  
covered watercolor paper

*With my husband Jim and our children Jessica, Jillian, and Andy, I kayaked the narrows from Lewistown to Arch Road in July. Along the way, we found some interesting spots that inspired paintings. This is one of them.*

Growing up in Altoona, Lori studied art with local artists Jane Decker and Cynthia Ake.

They both invited children into their homes to introduce them to art. Lori is happily carrying on that tradition and has fourteen students coming to her home every week to learn about the wonderful world of art.



## Moody Millbrook Marsh

Jennifer Shuey



2008  
Pastel



*I have fallen in love with the pastel medium to vibrantly and spontaneously capture the beauty and character of the natural landscape.*

Jennifer is the Executive Director of ClearWater Conservancy and a native of Centre County. A graduate of Bellefonte High School, with a B.S. of Landscape Architecture from Penn State University, Jennifer is committed to using her time and talents to make her community a better place. She is particularly interested in conserving the beautiful landscapes of central Pennsylvania and engaging more people in the protection of land and water resources. Jennifer is a member of the Art Alliance of Central PA, the Central Pennsylvania Pastel Society, and the Farmland Preservation Artists. Website: [jennifershueyart.247exhibits.com](http://jennifershueyart.247exhibits.com).

## Fringed Polygala

Jennifer Tucker and  
Gerald Lang



2008  
Digital Image  
CaptureArchival  
Digital Print



*Polygala paucifolia Milkwort Family.  
Commonly known as Fringed Polygala  
or Gaywings. The tiny plant grows in  
moist woodlands and blooms in the spring.  
Gaywings is a delightful common name for  
the eye-catching pink flowers. To really see this flower up close, kneel in the woods with a magnifying glass!  
The portrait of the flowers is uplifting to one's imagination.*

Our Botanical Series creative collaborations evolve from a life together at Hill Crystal Farm in partnership with the medicinal and spiritual properties of the plants growing around us. We believe the healing power inherent in the plants we choose to portray is transferred to the hyper-reality of the digital capture, creating a presence so real that viewers often touch the surface of the image expecting to touch the plant itself. Gerald is Emeritus Professor of Art and Integrative Arts at Penn State University. He founded The Digital Photography Studio in the College of Arts and Architecture and is an Apple Distinguished Educator. Jennifer received her Master of Fine Arts degree in Photography from Penn State University. Jennifer has been a practicing herbalist and flower essence practitioner for over twenty-five years. She is a guest teacher and presenter in the community. Website: [www.Jennifer-Tucker.com](http://www.Jennifer-Tucker.com) or [www.Gerald-Lang.com](http://www.Gerald-Lang.com).

## *A Jungle Story*

Lisa Dawn White, Full Moon Flower Farm Designs



April 2008

Mixed hand-made paper, watercolor, acrylic, and botanical specimens

*Layers of Pennsylvania native ferns, lunaria, and autumn collected Japanese maple leaves.*



Lisa (Full Moon Flower Farm Designs) is inspired by nature and its expression in the landscape. By incorporating a variety of botanical and organic elements, along with watercolor, acrylic, pastel and home-made papers, Lisa's botanical collages offer a contemporary interpretation on an ancient form of art. A whimsical interpretation of nature is one of the most important elements in each of her pieces. Website: [www.fullmoonflowerfarm.com](http://www.fullmoonflowerfarm.com).

## *Baby Seal Vessels, Humpback Whale Mug*

Cheri Lee Yarnell



2008

Porcelain

*I create these pieces out of concern for the welfare of seal pups and in opposition to the Canadian commercial seal slaughter, which is a cruel and horrific practice.*



Cheri is a local potter who has been making pots and other porcelain creations in her studio in Potter's Mills for about 20 years. Many of her individual pieces reflect her concern for endangered or imperiled species.



## *Copper Garden Trellis*

David J. Ziegler



2006

Metal

*Brackets for mounting are included. Great for annual vines or light perennial vines such as clematis or honeysuckle.*

Dave is the owner of Blackhawk Homestead Nursery and specializes in design and construction of water gardens, fountains, rain water harvesting systems, aquatic plants, native plants, and fish ponds.



## *Additional Silent Auction Items*



Dinner for 2 at Spat's Café & Speakeasy plus 2 Complimentary Tickets to Event of Choice in the 2008-09 Season of the Penn State Center for the Performing Arts



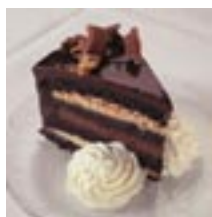
Two Series C Season Tickets (3 performances) to the concerts of the Pennsylvania Centre Orchestra 2008-2009 Season



Vera Bradley jacquard handbag donated by Wesley Scott's



Otto's Pub & Brewery Growler, 4 Glasses, Pub Club Membership, and a Case of Beer



Ishkabibble Cakes and Cupcakes - Valentine's Day Chocolate Gift Basket with

- one chocolate truffle cake (8")
- chocolate-dipped strawberries (12)
- chocolate truffles (12)
- individual mini chocolate cakes (4)
- double chocolate heart cookies (12)



Bagolitas spunky fringe handbag donated by Karrie Argiro



Custom-built muzzleloader donated by John Fulmer. Muzzleloader is a Thompson/Center Pennsylvania Hunter with a 1 in 48 inch twist. Caplock fits #11 caps and the hammer is bent outward to fit a scope.



A bottle of northern Italian "Banfi Brachetto Rosa Regale" – the only sparkling wine made specifically to go with chocolate – with a wine bucket and 6 beautiful champagne flutes, donated by John Corr, Southern Wine and Spirits.

# Special Raffle

Original 30" x 40" on Canvas

*Fisher Farm*

Jennifer Kane



2008

Original 30" x 40" Oil on Canvas

*For the purpose of supporting ClearWater Conservancy's Land Conservation Program, Jennifer began work on this original oil painting at the Fisher Farm Conservation Easement Celebration on July 27, 2008. It is her second painting in a continuing series of images of ClearWater's conserved lands. Creating a study during the event allowed her to infuse her work with the energy of those gathered in support of the land's protection and to bring attention and focus to the importance and spirit of the event. The resulting work was inspired by a sense of history and place, the pleasure of speaking with Barbara Fisher, and a few quiet walks through the property's rolling hills and fields. The painting process included sketching, painting and photographing the subject on location, then creating a larger, 30"x40" piece in the studio over the next several months. The finished painting is wired and has painted edges, ready to display.*

Jennifer Kane is a professional landscape and portrait artist and painting instructor. She grew up in the scenic Shawnee National Forest area of southern Illinois. Her education includes a BFA in Painting and an MFA in Theatre Design from the University of Illinois Urbana/Champaign. Her work is collected internationally, and has appeared in many regional juried shows and exhibits, including the Art of the State show in Harrisburg and the Central Pennsylvania Festival of the Arts. Jennifer's work is on permanent display at the corporate headquarters of the Knight Foundation in Miami, FL. Also, she was chosen as the first place artist in oil painting for the book, "Best of Artists: Pennsylvania".  
Website: [www.jenniferkaneart.com](http://www.jenniferkaneart.com).



## *To our supporters!*

Thank you for joining us this evening and supporting our work throughout the year! Our members, sponsors, and volunteers are the backbone of this organization and share in our conservation successes.

In 2008 we completed our eleventh conservation easement and our first in Huntingdon County. This conservation easement protects a 151-acre forested property in Franklin Township and was donated by owners Jim McCorkel and his sisters Betty Ann Jansson and Mary Lou Rozdilsky. The conservation easement not only keeps intact a large forest block, but also protects a portion of Warriors Mark Run, a major tributary of Spruce Creek, a High Quality Cold-water Fishery stream. Our total acreage conserved is now over 4,150.

Looking ahead to 2009, we have two more conservation easements nearing completion and are steadily working towards a positive conservation solution for the lands of the Spring Creek Canyon. Our Conservation Action Plan for the Nittany Valley is the framework for our priority land conservation, riparian stream buffer restoration, water monitoring, environmental outreach and education, and other key projects not only in this year, but for many years to come.

Last February we were recognized by the Chamber of Business and Industry of Centre County with their first ever Quality of Life Award for our conservation work! This achievement highlights an important aspect of ClearWater's role in the community—our dedication and our ability to establish and maintain positive partnerships with key community decision makers to enhance conservation of our natural resources for the benefit of all.

We can only succeed with the help of people like YOU! If you just got your first “taste” of ClearWater Conservancy this evening and are not yet a member, please join us in protecting what matters most in central Pennsylvania. Invest in natural resource conservation with a major pledge to our Campaign for Conservation, and come out to our many events to be a part of a community dedicated to the protection of our precious land and water resources.

Upcoming events in 2009:

- January 26 – Adventures in Conservation program: Guess Who's Coming to Dinner by Gary San Julian
- April 25 – 13th Annual Watershed Cleanup Day
- April 24/25 – Beatty Memorial Arbor Day Tree Plantings
- May 7–10 – Pennsylvania Land Conservation Conference at the Penn Stater
- May 10 – Adventures in Conservation program: traditional Mother's Day Wildflower Walk at The Rock
- August 9 (tentative) – McCorkel Tree Farm conservation easement celebration
- August 31 – Otto's Golf-Fest
- October 4 – Adventures in Conservation program: Spring Creek Day Family Festival at Millbrook Marsh Nature Center



# Thank You!

## to our Donors



### Dessert Donors

---

Allen Street Grill  
 Alto/Zola  
 Andy's On the Go Café  
 The Arena Bar & Grill  
 Autoport Restaurant  
 Café 210 West  
 Café on the Park  
 Cakes for Occasions  
 Cici's Pizza  
 Cheese Shoppe  
 Cool Beans Coffee & Tea  
 Damon's Restaurant  
 Delectable Delights by Heather Luse  
 Deli Restaurant  
 Diamond Deli  
 Diana Watson  
 Duffy's Tavern  
 Eat 'N Park Restaurant  
 Elk Creek Café  
 Evangelista's  
 Fresh Harvest Kafé  
 Gaffron's Sunrise Bakery  
 Garfield's  
 Gemelli Bakers  
 Giant

The Gingerbread Man  
 Herwig's Bistro  
 High Street Pub  
 Hoag's Catering  
 Honeybaked Ham Co. and Café  
 Igourmet.com  
 Ishkabibble Cakes and Cupcakes  
 Kelly's Steak and Seafood  
 LePapillon at Toftrees  
 Millheim Hotel  
 Mount Nittany Inn  
 Nittany Catering  
 Olde New York Restaurant  
 Olive Garden  
 Outback Steakhouse  
 Panera Bread  
 Penn State Creamery  
 The Penn Stater  
 State College Elks Club  
 The Tarragon Restaurant  
 The Tavern Restaurant  
 Walmart  
 Webster's Café  
 Wegman's Patisserie  
 Weis  
 Whistle Stop Restaurant

### Chocolate Confections



Boalsburg Chocolate Company  
 Endangered Species Chocolates  
 Gardners Candies  
 Gertrude Hawk Chocolates  
 The Hershey Company  
 MacIntyre's Candies

### Catalogue Production & Design



Advanced Color Graphics  
 Cramer Studios Inc. - Bruce Cramer  
 Patricia Craig  
 PixelClear Inc. - Jay Mastalerz

### Coffee Donor



Starbucks Coffee Company

### Framing / Mounting Donors



Bill Ebken, the frame factory  
 & gallery  
 John McQueary, The State College Framing  
 Company and Gallery  
 Uncle Eli's Artists Marketplace & Gift  
 Emporium

# Many thanks to our sponsors!



ADVANCED COLOR GRAPHICS



cramer studio, inc.



Beth Richards



FERNSLER ■ ARCHITECTURE, LLC

ARCHITECTURE ■ MANAGEMENT ■ ENGINEERING



Mary Lou, Bennett,  
RE/MAX Centre Realty



FAMILY & COSMETIC DENTISTRY  
WWW.BRIANWHITEANDAAARONROAN.COM



247Exhibits | Blackhawk Homestead Nursery | Centre County Women's Journal | McCormick Taylor, Engineers and Planners | Matson and Associates | PennTerra Engineering, Inc. | Penn Stater Hotel and Conference Center | Ritchie Veterinary Hospital | Sound Technology, Inc.

Telephone: 814.237-0400; [www.clearwaterconservancy.org](http://www.clearwaterconservancy.org)